

**WNT10B Antibody (Center)**  
**Purified Rabbit Polyclonal Antibody (Pab)**  
**Catalog # AP6595b****Specification**

---

**WNT10B Antibody (Center) - Product Information**

Application	WB, IHC-P, FC,E
Primary Accession	<a href="#">O00744</a>
Other Accession	<a href="#">P48614</a>
Reactivity	Human, Mouse
Host	Rabbit
Clonality	Polyclonal
Isotype	Rabbit IgG
Antigen Region	193-222

**WNT10B Antibody (Center) - Additional Information****Gene ID** 7480**Other Names**

Protein Wnt-10b, Protein Wnt-12, WNT10B, WNT12

**Target/Specificity**

This WNT10B antibody is generated from rabbits immunized with a KLH conjugated synthetic peptide between 193-222 amino acids from the Central region of human WNT10B.

**Dilution**

WB~~1:2000

IHC-P~~1:10~50

FC~~1:10~50

E~~Use at an assay dependent concentration.

**Format**

Purified polyclonal antibody supplied in PBS with 0.09% (W/V) sodium azide. This antibody is purified through a protein A column, followed by peptide affinity purification.

**Storage**

Maintain refrigerated at 2-8°C for up to 2 weeks. For long term storage store at -20°C in small aliquots to prevent freeze-thaw cycles.

**Precautions**

WNT10B Antibody (Center) is for research use only and not for use in diagnostic or therapeutic procedures.

**WNT10B Antibody (Center) - Protein Information****Name** WNT10B

## Synonyms WNT12

**Function** Member of the Wnt ligand gene family that encodes for secreted proteins, which activate the Wnt signaling cascade. Specifically activates canonical Wnt/beta-catenin signaling and thus triggers beta-catenin/LEF/TCF-mediated transcriptional programs. Involved in signaling networks controlling stemness, pluripotency and cell fate decisions. Acts in the immune system, mammary gland, adipose tissue, bone and skin.

## Cellular Location

Secreted, extracellular space, extracellular matrix. Secreted

## Tissue Location

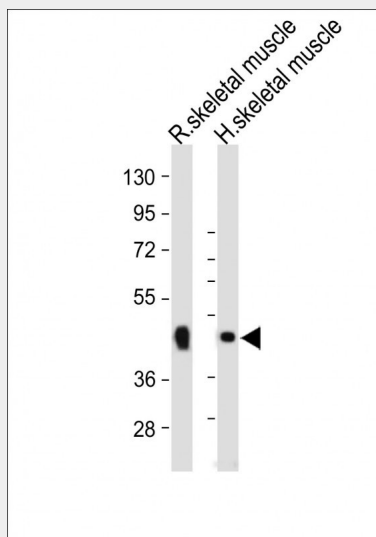
Detected in most adult tissues. Highest levels were found in heart and skeletal muscle. Low levels are found in brain

## WNT10B Antibody (Center) - Protocols

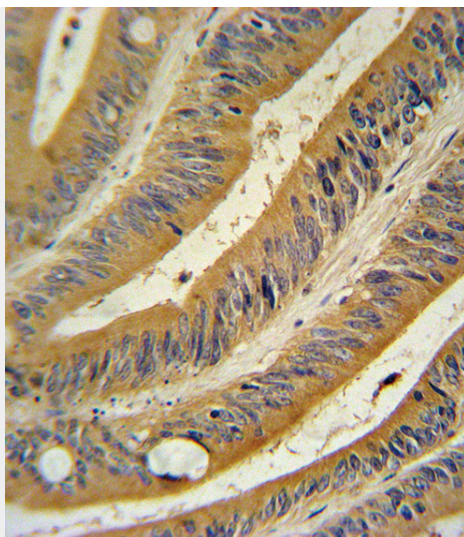
Provided below are standard protocols that you may find useful for product applications.

- [Western Blot](#)
- [Blocking Peptides](#)
- [Dot Blot](#)
- [Immunohistochemistry](#)
- [Immunofluorescence](#)
- [Immunoprecipitation](#)
- [Flow Cytometry](#)
- [Cell Culture](#)

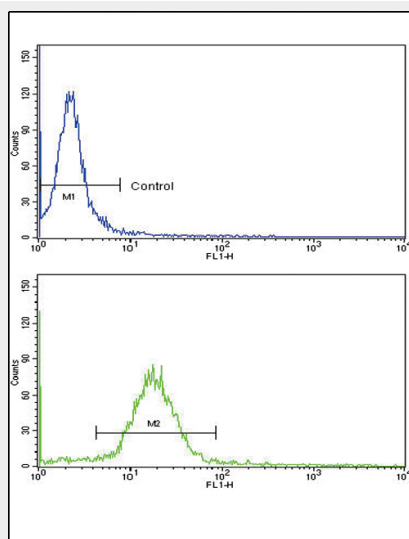
## WNT10B Antibody (Center) - Images



All lanes : Anti-WNT10B Antibody (Center) at 1:2000 dilution Lane 1: Rat skeletal muscle whole lysate Lane 2: Human skeletal muscle whole lysate Lysates/proteins at 20 µg per lane. Secondary Goat Anti-Rabbit IgG, (H+L), Peroxidase conjugated at 1/10000 dilution. Predicted band size : 43 kDa Blocking/Dilution buffer: 5% NFDm/TBST.



WNT10B Antibody (Center) (Cat. #AP6595b) immunohistochemistry analysis in formalin fixed and paraffin embedded human colon carcinoma followed by peroxidase conjugation of the secondary antibody and DAB staining. This data demonstrates the use of the WNT10B Antibody (Center) for immunohistochemistry. Clinical relevance has not been evaluated.



Flow cytometric analysis of MDA-231 cells using WNT10B Antibody (Center)(bottom histogram) compared to a negative control cell (top histogram). FITC-conjugated goat-anti-rabbit secondary antibodies were used for the analysis.

### WNT10B Antibody (Center) - Background

The WNT gene family consists of structurally related genes which encode secreted signaling proteins. These proteins have been implicated in oncogenesis and in several developmental processes, including regulation of cell fate and patterning during embryogenesis. WNT10B is a member of the WNT family. It may be involved in breast cancer, and its protein signaling is likely a molecular switch that governs adipogenesis. This protein is 96% identical to the mouse Wnt10b protein at the amino acid level.

### WNT10B Antibody (Center) - References

Zmuda,J.M., J. Bone Miner. Res. 24 (3), 437-447 (2009)  
Pederson,L., Proc. Natl. Acad. Sci. U.S.A. 105 (52), 20764-20769 (2008)